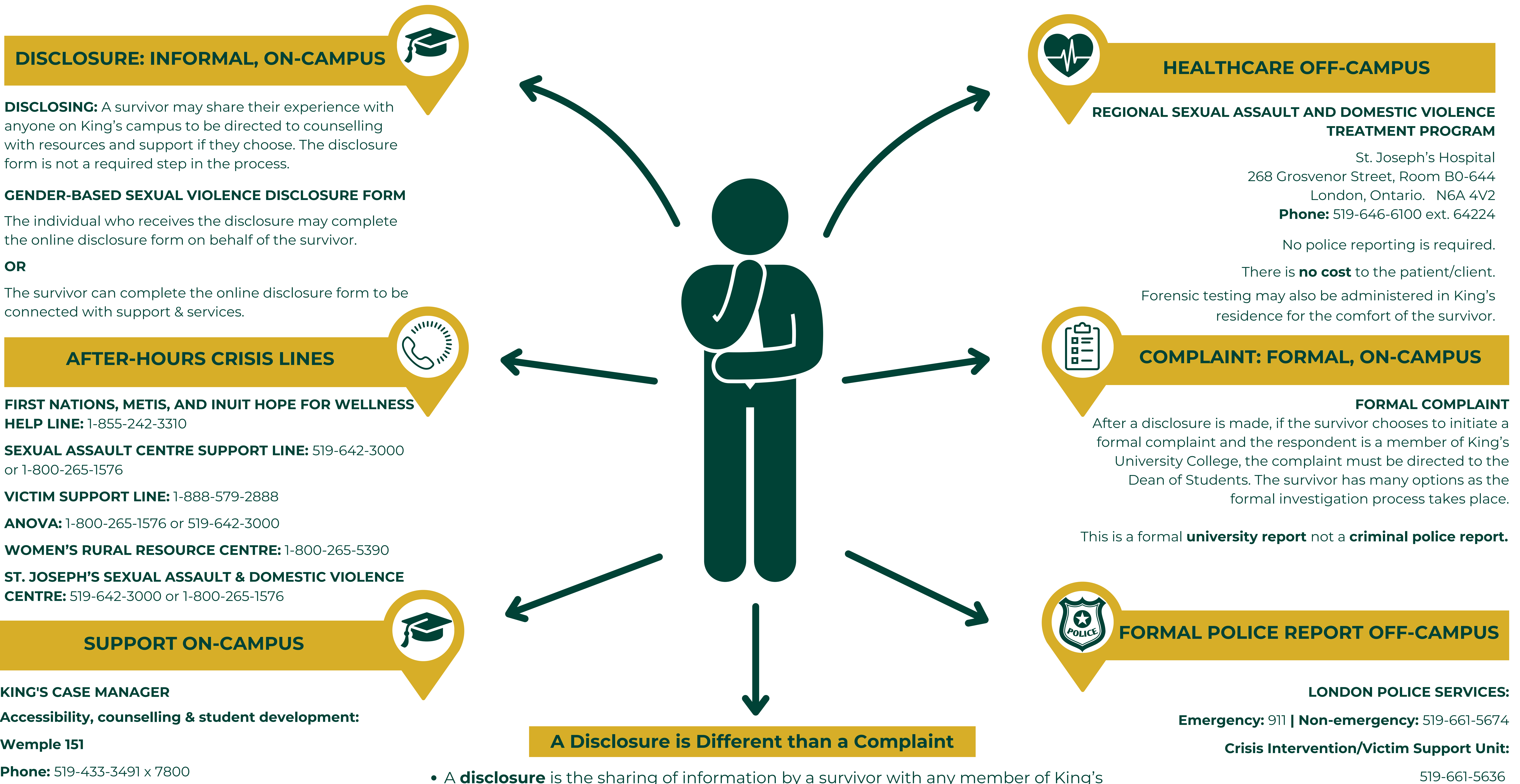


If You've Experienced Gender-Based Sexual Violence, You Have Options



DISCLOSURE: INFORMAL, ON-CAMPUS

DISCLOSING: A survivor may share their experience with anyone on King's campus to be directed to counselling with resources and support if they choose. The disclosure form is not a required step in the process.

GENDER-BASED SEXUAL VIOLENCE DISCLOSURE FORM

The individual who receives the disclosure may complete the online disclosure form on behalf of the survivor.

OR

The survivor can complete the online disclosure form to be connected with support & services.

AFTER-HOURS CRISIS LINES

FIRST NATIONS, METIS, AND INUIT HOPE FOR WELLNESS HELP LINE: 1-855-242-3310

SEXUAL ASSAULT CENTRE SUPPORT LINE: 519-642-3000 or 1-800-265-1576

VICTIM SUPPORT LINE: 1-888-579-2888

ANOVA: 1-800-265-1576 or 519-642-3000

WOMEN'S RURAL RESOURCE CENTRE: 1-800-265-5390

ST. JOSEPH'S SEXUAL ASSAULT & DOMESTIC VIOLENCE CENTRE: 519-642-3000 or 1-800-265-1576

SUPPORT ON-CAMPUS

KING'S CASE MANAGER

Accessibility, counselling & student development:

Wemple 151

Phone: 519-433-3491 x 7800

Email: care@kings.uwo.ca

WESTERN'S GENDER-BASED VIOLENCE & SURVIVOR SUPPORT CASE MANAGER

Phone: 519-661-3568

Email: support@uwo.ca

Non-judgmental, confidential support.

HEALTHCARE OFF-CAMPUS

REGIONAL SEXUAL ASSAULT AND DOMESTIC VIOLENCE TREATMENT PROGRAM

St. Joseph's Hospital
268 Grosvenor Street, Room B0-644

London, Ontario. N6A 4V2

Phone: 519-646-6100 ext. 64224

No police reporting is required.

There is **no cost** to the patient/client.

Forensic testing may also be administered in King's residence for the comfort of the survivor.

COMPLAINT: FORMAL, ON-CAMPUS

FORMAL COMPLAINT

After a disclosure is made, if the survivor chooses to initiate a formal complaint and the respondent is a member of King's University College, the complaint must be directed to the Dean of Students. The survivor has many options as the formal investigation process takes place.

This is a formal **university report** not a **criminal police report**.

FORMAL POLICE REPORT OFF-CAMPUS

LONDON POLICE SERVICES:

Emergency: 911 | **Non-emergency:** 519-661-5674

Crisis Intervention/Victim Support Unit:

519-661-5636

A Disclosure is Different than a Complaint

- A **disclosure** is the sharing of information by a survivor with any member of King's whom they trust concerning an incident of GBV.
- A **complaint** is the sharing of information concerning an incident of GBV to initiate a formal complaint process with the University.
- **The survivor makes the decision to file a complaint.** Accessing support and resources does not require the filing of a formal complaint with the University.

