



international **STUDENT**

2022-2023 ————— guidebook





Table of Contents

4	Welcome to King's
5-6	King's International
7	King's and Western
8	Welcome to London
9	The Weather
10	International Student Services
11	Academic Culture at King's
12	Student Affairs
13-15	Academic Support Services
16	Student Financial Services
17-18	Immigration
19-20	Employment and Volunteering
21	Health Services
22-23	Services at Western and King's
24	Living in Residence
25	Living off Campus
26	Food
27	Canadian Holiday
28	Practicing Your Faith
29-30	Exploring London and Beyond
31	King's University College Students' Council
32	Calendar of International Events
33	Directory

WELCOME TO KING'S

Greetings and welcome to King's University College at Western University. We are thrilled that you have chosen King's University College to continue your education. This is YOUR place to BE, BECOME and BELONG!

King's has a long history of welcoming students from all over the world to our academic community, Western and to London. Over your time with us I hope you will explore the many opportunities inside and outside the classroom that are provided to students. Our dedicated faculty and staff are here to support you on your learning journey along with student leaders who can introduce you the varied co-curricular and extra-curricular activities that make the King's student experience truly unique.

Please take some time to review the information in the guidebook and contact the International Office if you have any questions! I look forward to meeting you on campus and feel free to contact me anytime!

Joe Henry, Dean of Students
Wemple Building, W156
519-433-3491 ext. 4548
joe.henry@kings.uwo.ca
[Twitter @askdeanjo](https://twitter.com/askdeanjo)
[Instagram @askdeanjo](https://www.instagram.com/askdeanjo)



We acknowledge that our campus at King's University College is situated on the traditional territories of the Anishinaabek, Haudenosaunee, Lūnaapéewak, and Chonnonton peoples, all of whom have longstanding relationships to the land of Southwestern Ontario and the City of London. The First Nations communities of our local area include Chippewas of the Thames First Nation, Oneida Nation of the Thames, and Munsee Delaware Nation. In our region, there are eleven First Nations communities, as well as a growing indigenous urban population. King's University College values the significant historical and contemporary contributions of local and regional First Nations, and all of the Original Peoples of Turtle Island (also known as North America).

KING'S INTERNATIONAL

Congratulations and welcome to King's University College! Your university years can be some of the most exciting years of your life and we are here to assist you in having a successful university experience at King's.

During your time here, know that we are here for you. Whether you need immigration assistance, are dealing with adjusting to Canadian culture, or have a question that you're not quite sure who to ask, our team of friendly staff will be happy to assist you and provide you with the resources you need – please don't hesitate to reach out to any of one of us!

King's International also offers a number of ways for you to get involved in the King's community. Join our international student events or Peer Guide Program and make friends from around the world. Stay up to date on all things international by liking us on Facebook and Instagram and following us on Twitter!

King's is not just an institution, but a community, and we are so pleased for you to become part of our community. I would like to thank you for choosing King's and for enriching our campus with the diversity you bring. We hope you enjoy your time at your home away from home. I look forward to meeting with you soon.

Amna Wasty, MA, RISIA
Manager, King's International
Alumni Court 220B
amna.wasty@kings.uwo.ca



KING'S INTERNATIONAL

Welcome to King's! We are thrilled that you have chosen to join our community and we cannot wait to get to know you. I understand how far you are from your home countries, but we hope to make King's your home away from home during your time with us!



We want to make you feel welcomed and hope you get involved in our programming. We have a multitude of events planned for the year starting with our week-long bridging orientation and we would love it if you join us at our events throughout the year. Another great way to connect with King's students is by joining our **Peer Guide Program**. I can't wait to meet all of you soon!

Olivia Yusuf

International Programs Coordinator
King's International Alumni Court 220
olivia.yusuf@kings.uwo.ca

Welcome to King's! We look forward to welcoming you! We are here to assist you from pre-arrival information questions to resources at King's and the London communities.



The journey with life overseas – it is exciting, difficult and it's a time where you learn so much about who you are. I highly recommend continuing exploring and saying yes to any experiences you will have and I believe you can make it. Don't forget to join our Peer Guide Program and make friends all over the world.

Hope you have a successful academic fun-filled experience at King's and see you soon!

Simeng Xu (Tina), MEd, RISIA

International & Exchange Student Advisor
King's International Alumni Court 220A
Simeng.Xu@kings.uwo.ca

KING'S UNIVERSITY COLLEGE

King's University College truly offers the "best of both worlds." King's students have the benefits offered through the college's affiliation with Western University and the advantage of a smaller community setting. King's stands second to none in its quality of teaching faculty.

A major advantage of King's is its small class size with only 50-60 students in a first year class. This allows professors and students to engage in meaningful discussions and enables professors to be readily available to students.

Students of all faiths are welcome at King's. Expression of various ideas and perspectives is strongly encouraged. In addition, King's offers many helpful student services and an excellent scholarship and bursary program.

King's University College
519-433-3491
1-800-265-4406
www.kings.uwo.ca



WESTERN UNIVERSITY

King's affiliation with Western University enables students to have access to the services offered at Western University. King's students graduate with a Western University degree. In addition, King's degree students are able to take courses at Western, Brescia and Huron campuses. A shuttle bus offers a convenient commute between campuses.

Western University was founded in 1878 and has grown to be one of the most respected universities in all of Canada. The beautiful campus is situated on 155 hectares of land along the banks of the Thames River.

Western University
519-661-2111
www.uwo.ca



Western



WELCOME TO LONDON

London, often referred to as The Forest City, is the 11th largest city in Canada. Located close to Toronto, the nation's largest city, and the U.S. border, this region's position brings everything within easy reach.

London offers all the amenities of a big city combined with a tight community feeling. It offers everything from festivals and conventions, to great shopping and different kinds of cuisine. Opportunities are plentiful for newcomers. The city offers work opportunities, education, culture, dining, shopping, and fun for the family. Some of London's popular places to go to include Budweiser Gardens, Covent Garden Market, Centennial Hall, Richmond Row, and the Western Fair District.

Come discover London!

- <http://immigration.london.ca/Pages/default.aspx>
- www.london.ca
- www.londontourism.ca



THE WEATHER

London's Four Seasons

In Ontario we experience a wide range of temperatures and weather conditions.

Autumn

The weather gets cooler, the days get shorter, and the leaves on many trees change colour and fall to the ground. Make sure you dress for the weather by wearing boots or warm shoes, a jacket or warm sweater and mittens and a hat when needed.

Winter

Winter officially begins in December but we may get snow as early as November. January and February are the coldest months. The average temperature during these months is between a -2°C and -10°C (15-29°F). Winter provides ample opportunity for outdoor winter activities such as skating, skiing, snowboarding, and tobogganing.

Make sure you purchase a good-quality winter coat that is waterproof, has a fleece lining and a warm hood. You will also need waterproof boots as there is a lot of wet slush on the ground in winter.

Visit Settlement.org's website for information about how to dress for winter in Ontario: <http://settlement.org/ontario/daily-life/shopping/shopping-for-clothes/how-should-i-dress-for-winter-in-ontario> Tip: Bring a pair of indoor shoes in your backpack. You can put these on when you get to where you are going.

Spring

Spring is a rainy season in most parts of Ontario. Make sure you have an umbrella and raincoat to stay dry. Average daytime temperatures are about 8°C (46°F) in March and rise slowly through the rest of the season. The nights are cool. Spring can surprise you with unexpectedly warm and cold days. Be prepared to add or take off a layer of clothing in spring.

Summer

Ontario summers are typically humid and sunny. The temperature averages around 26°C but can climb to over 30°C (86°F). Wear sunglasses, sunscreen and hats to protect yourself from the sun's harmful rays.

INTERNATIONAL STUDENT SERVICES

Advising and Support, King's International Office:

Amna Wasty, Manager and Simeng Xu (Tina), Exchange & International Student Advisor are available for advising and support. [King's International](#) also organizes international student programs and provides information on exchange opportunities available at partner universities abroad. Advising is available for any matters pertaining to communication with your home/partner institution, immigration questions, international services and programs or cultural/personal adjustment.

Schedule an appointment:

Individual appointments are available. To schedule an appointment, drop by King's International, call 519-433-3491 ext. 4623 or email international@kings.uwo.ca

Drop in hours:

Monday – Friday
2 p.m. – 3 p.m.



King's Peer Guide Program

The King's Peer Guide Program, offered by King's International, is designed to assist newly arrived international students with adjustment to university culture and Canadian life. This voluntary program pairs new international students with returning King's students.

International students and King's peer guides benefit from this opportunity by developing cross-cultural skills and understanding as well as diverse friendship networks. International students and peer guides spend time together on a weekly basis throughout the fall term.

They are also invited to attend international social events including a welcome reception, excursions and parties celebrating cultural holidays.

To join King's International Peer Guide Program, register online at: www.kings.uwo.ca/peer-guide



ACADEMIC CULTURE AT KING'S

If you are transitioning from secondary school to university, you will face a whole new set of expectations and an increased workload. The academic culture at King's University College may also be different from universities in your home country. It is normal for students to see an initial drop in their grade averages.



LECTURES

Depending on the class, lectures can run between one and three hours in length. Students are expected to attend classes regularly and take notes. It is normal for a student to informally speak to a professor after class and ask questions. Student participation during lectures is also valued.

TUTORIALS

Certain classes have tutorials, which are separate from class time, where small groups discuss readings, assignments, terms and concepts outlined in the lectures. Tutorials are often led by a Teaching Assistant referred to as a TA. Tutorials include the sharing of ideas and student discussion.

TUTORIALS ESSAYS

Some courses require students to submit essays throughout the term. Essays at the undergraduate level usually range from six to 15 pages. Professors will give instructions on topics and preferred formats.

STUDENT AFFAIRS



Dean of Students

The Dean of Students, Joe Henry, is responsible for many aspects of the student experience as well as student support services including: Accessibility, Counselling and Student Development, King's International, and Residence and Conference Services. In addition, he supports King's University College Students' Council in fulfilling their mandate.

Accessibility Counselling and Student Development

Accessibility, Counselling and Student Development (ACSD) provides student support services for all King's students. ACSD offers:

Learning Skills

Learning Skills Services can help you learn a variety of scholastic and foundational skills. Individual appointments with a learning skills strategist, sessions with peer learning coaches, and exam prep workshops are available to assist you in achieving your academic goals.

Personal Counselling

Provides the opportunity to meet one-on-one with a professional counsellor to discuss a variety of personal concerns. We also offer mindfulness wellness resources:

- Walk-In Sessions
- Meditation Group
- Audio Meditation Resources

Accessibility Services for Students with Disabilities

Services for Students with Disabilities at King's is committed to providing an accessible and barrier-free learning environment for students with disabilities.

Career Counselling

Career Services at King's can provide you with help connecting your field of study to occupational alternatives, defining a vocational goal, creating a post-degree educational plan, accessing resources to develop your resume and job search strategies and much, much more! kings.uwo.ca/career-connect

As a King's student you can have full access to extensive career resources at Western University. Visit our [Student Affairs page](#) for further information.

Please contact acsd@kings.uwo.ca, call 519-433-3491 ext. 4321, or visit the ACSD office in Wemple Hall, room 157.

The King's Promise

The King's Promise is a voluntary four-year co-curricular program at King's which complements your academic studies and offers a guarantee that you will find employment within six months of graduation or you can return to King's for an additional year of courses and career support, tuition-free! Throughout your 4 years at King's you will complete activities to support your career development, enhance pre-employment skills, and engage in experiential learning. The King's Promise program will support International Students to develop professional networks within the London community, gain local work experience, and access immigration advising on campus. The King's Promise program will empower students to achieve their education, career, and life goals in line with King's mission as "a Place to be and a Place to Become". For more information, [visit us online here](#), and follow us on [Instagram](#), [Twitter](#), and [Discord](#). If you have any questions, please don't hesitate to reach out by email (ThePromise@kings.uwo.ca).

ACADEMIC SUPPORT SERVICES

The Write Place: Empowering Writers

The Write Place is a free and friendly service offered through the Department of English, French, and Writing at King's.

Register for an account, and make an appointment through [WCONLINE](#) to get feedback on your essay, creative piece, résumé, graduate school application, or other writing projects. Come in at any stage of your writing process (from brainstorming to revision), with your essay topic, and your thoughts. Our trained tutors and Writing Specialists will help you develop the skills you need to be a successful writer. They will discuss how you can narrow down your topic, and research it. The Write Place will also help you create a convincing argument, structure your essay, revise it, cite your sources correctly, and edit your own writing. The Writing Specialists will help you identify and address specific writing problems, develop research and reading strategies, and improve your grammar and vocabulary.

The Write Place also hosts Creative Writing events and workshops throughout the academic year.

Register for an account, and access the current schedule to make an appointment at: kings.mywconline.com.

519-433-3491 ext. 4475

Facebook:

[@WritePlaceatKings](#)

Instagram:

[@thewriteplaceatkings](#)

www.kings.uwo.ca/write-place



Academic Counselling

Academic counselling for King's degree requirements is done by counsellors in the **Academic Dean's Office**. The Academic Counsellors are available to answer your questions about courses, programs, regulations and any other academic concerns. Subject-specific counselling is also offered by the department chairs and faculty during their office hours.

Please complete the **Student Intake Form**. A member of our Advising Team will be in contact with you as soon as possible. Please be patient as we are experiencing a higher than normal volume of student inquiries.

or, Please call our Academic Counselling Helpline. We're open Monday to Friday, from 10 a.m. - 3 p.m. Please call us directly at 519-518-2907 or toll free at 1-800-265-4406. Someone will assist you in completing the Student intake Form.

We are happy to provide assistance to students seeking academic counselling. We are committed to providing the highest standard of academic counselling in a timely and professional way, with attention to detail, accuracy, and confidentiality.

You can find your **Fall/Winter 2022/23 timetable here**.



Tutoring

Math tutoring is offered by skilled peer tutors. Watch for drop-in hours and room locations on the TV monitors, postings on bulletin boards and announcements in your math class. Economics tutoring is offered by the School of Management, Economics, and Mathematics. Drop-in hours and room locations will be advertised on TV monitors, posted on bulletin boards throughout King's University College and announced in your Economics 1021/1022 class. For more information about academic support visit the **Learning Hub page**.



Learning Skills Services

Learning Skills Services offers group presentations, individual appointments, and drop-in support to help you with:

- Time management
- Reading comprehension
- Note-taking strategies for lectures and textbooks
- Test taking and test anxiety
- Study skills and strategies



King's Academic Mentoring Program (KAMP)



KAMP was created by students for students. Mentors guide students through their transition to university, can help with academic questions, health and wellness information, goal setting, extracurricular recommendations, resource connections, and more.



Students will meet one-on-one, in small groups with other students and their mentor, and be invited to KAMP events throughout the year.

KAMP aims to increase student retention and support student engagement through a holistic approach that incorporates student motivation, fosters academic relationships, and creates a culture of academic excellence.

www.kings.uwo.ca/kamp
kingskamp@kings.uwo.ca

STUDENT FINANCIAL SERVICES

IMMIGRATION



Student Financial Services assists international students with questions about tuition, payments, the University Health Insurance Plan (UHIP), Scholarships and Bursaries and the International Work Experience Program (IWE). For further information please visit: www.kings.uwo.ca/money-matters

Generic Fee Schedules

Posted online at the beginning of June at: www.kings.uwo.ca/fee-schedules

Your Personalized Fee Statements

Will be available online by mid-July at: www.kingscollege.net/sfsPortal. Log in using your UWO username and password.

Tuition Due Dates for International Students:

- August 1 – first installment of tuition and residence fees due for international degree students
- November 1 – second installment of tuition and residence fees due for international degree students on payment plan B (if applicable)

Health and Dental Plan Opt-Out

A Health and Dental Plan fee is included as part of the full-time activity fees for degree students. If a student has the same or more coverage, they can choose to opt-out online at studentbenefits.ca. The deadline to opt-out will be at the end of September.

Scholarships and Bursaries

In-course award applications typically open August 1 and are due September 30. For further information, including eligibility criteria and applications, please visit: www.kings.uwo.ca/scholarships

Parking Passes: Available at www.kings.uwo.ca/parking

Student Financial Services: Wemple 144.

Monday to Friday 9 a.m.–3:30 p.m. daily (excluding holidays).

Tel. 519-433-3491 ext. 4319.

Email studentfinance@kings.uwo.ca

Immigration Guidance at King's

Please [contact King's International](#) for matters pertaining to your immigration status, including questions concerning your Study Permit, Student Permit Extension, Temporary Resident Visa (TRV) Working in Canada and your Post Graduation Work Permit (PGWP).

Study Permit

International students who study at King's University College for more than six months must have a valid Study Permit that will allow them to study at a post-secondary institution in Canada.

Please see: www.uwo.ca/international/iesc/visas

All study permit holders in Canada need to actively pursue studies.

- If you hold a study permit, you must remain enrolled and make reasonable and timely progress towards completing your program.
- Failing to do so could lead to your removal from Canada.

Expiry Date

It is important to know the expiry date for your study permit. You must obtain an extension of your study permit before it expires.

For information on extending your study permit see:

<https://www.canada.ca/en/immigration-refugees-citizenship/services/>

Temporary Resident Visa (TRV)

If you are currently outside Canada, you may apply for your visa online or at a Visa Application Centre. For a list of visa offices, visit: <https://www.canada.ca/en/immigration-refugees-citizenship/corporate/contact-ircc/offices/international-visa-offices.html>

To apply online, visit: <https://www.cic.gc.ca/english/information/applications/visa.asp>

Passport

Students must have a valid passport at all times. If you need to obtain a new passport, it is recommended that you begin this process at least four months before the expiration date.

For information on immigration procedures please visit:

www.uwo.ca/international/iesc/visas/index.html and <https://www.canada.ca/en/services/immigration-citizenship.html>

For full details about applying for a visa or study permit, please visit www.canada.ca/en/immigration-refugees-citizenship/services/study-canada.html

Western International – IESC Immigration Services:
<https://iesc.uwo.ca/visas/index.html>

When applying for a Study Permit or Temporary Resident Visa renewal with IRCC you will require an official letter that confirms your enrollment status from King's Enrolment Services. You can request this letter online: <https://www.kings.uwo.ca/current-students/courses-enrolment/forms/>

For further information or to make an appointment to discuss an immigration matter, contact King's International at international@kings.uwo.ca.



EMPLOYMENT AND VOLUNTEERING

Employment

While searching for a job in Canada, you want to be aware of all the rules and regulations that pertain to your employment. Listed below are the employment opportunities for international students at King's University College and in Canada.

International Work Experience Program (IWE)

The International Work Experience Program grants international students at King's the opportunity of gaining employment experience on campus while earning their degree. Campus jobs will be posted on the King's website. Students can apply for the IWE Program at King's through Financial Services or online at: <https://www.kings.uwo.ca/current-students/money-matters/financial-aid/international-students/international-work-experience-program/>

Work off-Campus

You can work off campus if:

- you are a full-time student in a program that is longer than six months
- you have a valid study permit that includes a condition that says you can work off-campus

For more information please check:

www.cic.gc.ca/english/study/work-offcampus.asp

For career opportunities visit Western Connect at:

<https://connect.uwo.ca/home.htm>

The Post-Graduation Work Permit Program

This program allows students who have graduated from King's and participating Canadian post-secondary institutions to receive valuable experience in the Canadian workplace and launch their careers:
www.cic.gc.ca/english/study/work-postgrad.asp

For PGWP inquiries please contact King's International.

Email: international@kings.uwo.ca

Devant

King's has partnered with Devant to offer specialized career support services for our international students, and to give you the knowledge, tools, and connections to successfully engage with Canadian employers and get hired." Find more information about [Devant on their site](#).
[Register for Devant here](#).

Income Tax

Any money you earn in Canada, including income earned from employment, scholarships, bursaries, assistantships (TA or RA), research grants, or fellowships is subject to Canadian Income Tax. The deadline to complete and mail your Income Tax forms is midnight April 30 of each year.

Every year, the International and Exchange Student Centre at Western offers a free drop-in income tax clinic for international students. This tax clinic offers free income tax information sessions for international students. These sessions are open to all current international students at Western University, including students at King's University College and affiliates.

International students are required to file an income tax return if

- they receive any income (from employment, scholarship/bursary, fellowship, assistantship, research grant, investments, etc.)
- they want to claim a refund
- they want to apply for the Harmonized Sales Tax (HST), Ontario Trillium Benefit and other tax credits
- they or their spouse or common-law partner want to start or continue receiving Canada Child Tax Benefit payments

Learn more about filing your taxes from the IESC website:

www.iesc.uwo.ca/student_life/money_and_taxes/income_taxes/index.html

Applying for a Social Insurance Number

A Social Insurance Number (SIN) is a number the Government of Canada uses in the administration of various government programs and to keep track of income for tax purposes. If you plan to work while in Canada you must have a SIN. For more information please visit:

https://iesc.uwo.ca/visas/working_and_volunteering/social_insurance_number.html

Volunteer Opportunities

Volunteering means getting involved in the London community while enhancing your personal and professional skills. There are many places to volunteer in London. For more information about volunteering visit:

Volunteer Canada — volunteer.ca

Volunteer Services London —

www.relocatecanada.com/london/vol.html

Career Central — <https://connect.uwo.ca/home.htm>



HEALTH SERVICES



University Health Insurance Plan

The University Health Insurance Plan (UHIP) covers the cost of basic medical treatment while you are in Canada. UHIP enrolment will be initiated automatically when your courses are processed by Enrolment Services. Soon after arriving at King's, you will receive an email to your Western email account directing you to a website where you will be able to download and print your UHIP card. For more information about your UHIP coverage see: www.uhip.ca

Making a Claim

You will need to present proof of UHIP coverage (UHIP card), when you seek medical attention. To make a request for reimbursement, you will need to complete a UHIP claim form. For detailed instructions on how to complete and submit a UHIP claim, please visit: uhip.ca/make-a-claim.aspx

Student Health Services

Western University's Student Health Services (SHS) facility is located on the lower level of the University Community Centre (UCC). SHS offers full medical services to all students. You can book an appointment in person or by calling Student Health Services.

University Community Centre, room 11. Phone: 519-661-3030

www.uwo.ca/health

If you experience a medical problem when the Student Health Services office is closed, please go to the nearest urgent care centre, walk-in clinic or a hospital emergency room.

Emergency Departments

University Hospital (located on Western's campus)

339 Windermere Rd.

Phone: 519-663-3197

Victoria Hospital

800 Commissioners Rd. East

Phone: 519-685-8141

In an emergency, always dial 911.

SERVICES AT WESTERN & KING'S

International Student Services at Western

The International Student Centre at Western also provides services for international students, some of which are similar to those provided at King's. You are welcome to take advantage of these services and events. For more information, visit the following websites:

- www.international.uwo.ca
- www.sdc.uwo.ca



Shuttle Bus Services

Shuttle buses run approximately every 20–30 minutes between King's, Western and Brescia. [See shuttle bus schedule.](#)



Buying Books

The Book Store at Western is located on the lower level of the University Community Centre (UCC). You can check your personal booklist online:

www.bookstore.uwo.ca

Phone: 519-661-3520

**THE
BOOK
STORE**
AT WESTERN



King's Computer Lab

The Computer Lab is located in room W045 of the Wemple Building (east end of cafeteria). Printing is available from the copier. Print credits can be purchased in the library or online at kucprint01.kc.uwo.ca/user

The Darryl J. King Student Life Centre

With everything from classrooms to a 490 seat theater and comfortable chairs to rest near a fireplace, the [King Centre](#) is truly a gathering place. It includes meeting rooms, Student Council offices, learning lounge areas, a reflection room, fitness centre and a games room. The King Centre is named in recognition of a generous donation from Darryl J. King '97. You can access it through the main entrance or through the Cardinal Carter Library.



Smoke Free Campus

King's and Western are a completely smoke and vape free campus. For more information about the policy and the services provided go to: kings.uwo.ca/smoke-free-campus

The Cardinal Carter Library

The heart of King's campus is the beautiful, well serviced Cardinal Carter Library. With access to a wide range of resources, both in print and online, our library has everything you need to succeed in your course work. Helpful library staff will work with you to build your skills, so you are confident researching, writing and citing. Our research guides help you find the right resources, tailored to each program offered at King's. The library offers an array of comfortable study spaces, including group study rooms, large tables, wired work spaces for collaborative activities, access labs, video viewing rooms and quiet conversation lounges. We are here to support you in our welcoming academic space. More information can be found on our website at: kings.uwo.ca/library

Contact Us

519-433-3491 or 519-433-0041

Circulation: ext. 4505

Research Help: ext. 4537



LIVING IN RESIDENCE



King's offers an excellent residence experience for all students who choose to live on campus. [Living in residence](#) allows you to make new friends in a great living environment. It offers a wonderful opportunity to get involved in the King's community. King's is very pleased to host students from around the world and wants every student to feel at home on campus. Residence Assistants (RAs) and student residence life staff live in each residence area, and are there to provide guidance and support.

Mail

All residents are provided with a mailbox, located at Central Services, room W002 in Wemple, beside the dining hall.

Internet

All rooms have two ways to connect to the Internet: Reznets and wireless. The public residence areas (lounges and study rooms) also have wireless internet access. The cost of the Reznets Internet is included in your residence fee.

Telephone and Cable

Each room is equipped with a telephone line and a cable outlet (paid subscription required). Local phone service and private voicemail accounts are provided for each resident as part of your residence fees. The TV lounges in each residence unit have enhanced cable packages.

Housekeeping

Residence rooms are vacuumed by the cleaning staff once a week. Residence common areas (lounges, washrooms, halls) are cleaned daily on weekdays.

Residence Information Desk Open 2 p.m.–7 a.m. daily

The Residence Information Desk (RID) located at the entrance of Alumni Court Residence has DVD players, a variety of movies (including international titles), sports equipment, video games and consoles and board games all available to borrow free of charge. The RID also serves as a communication centre for residence staff and King's security. If you have noise complaints, or require residence staff assistance, call the RID at 519-433-3491 ext. 4471. First aid assistance is also available.

LIVING OFF-CAMPUS



Finding a place to live off campus can be a large task to accomplish. There are many things you need to consider before signing the lease. Below are a few things to look for:

- Facilities (i.e. laundry, kitchen facilities, heating, lighting)
- Furnishings (How much of the house or room is furnished?)
- Rent (are utilities included?)
- Location (Is it close to the grocery shopping, medical service, bus routes, school?)

Western Off-Campus Housing Services

www.offcampus.uwo.ca | (519) 661-3550



FOOD



Aramark Campus Food Services

Thames Market, Wemple

All students who live in residence purchase a Meal Plan, allowing you to eat at Thames Marketing throughout the year. Thames Market is our cafeteria offering a wide variety of nutritious meals and snacks to help energize you throughout your busy day. In addition to soup, sushi and snacks, some of our stations include:

The Grill: All day breakfast, fresh grilled burgers, fries and more.

Umami: Featuring Japanese style Cantonese and udon noodle and rice bowls.

PizzaPizza: Hot and ready pizza, chicken nuggets and chicken wings.

Healthy Kitchen: Delicious homemade entrées and sides such as baked chicken, mashed potatoes and roasted local vegetables.

Chop N Top: Build your own salad, sandwich or wrap with fresh vegetables, hearty grains and healthy proteins.

Thames Market is the ideal location at King's University College to accommodate dietary needs such as: allergies or food intolerances (soy, eggs, nuts, dairy, seafood & wheat), vegetarian, vegan, no gluten, halal and prescribed diets with the support of our on-site Chef.



Subway

Thames Market, Wemple

Your friendly sandwich artist will build you a made to order sandwich with bread baked fresh daily or salads topped the way you want it. Sides and drinks are available to make the perfect meal.



Cafe 54

King Student Life Centre

Proudly serving a selection of Fair Trade coffee & teas as well as chocolate. The menu focuses on local fresh ingredients that are made fresh daily on campus. Our menu offers hot and cold beverages, baked goods, and a selection of homemade soups and sandwiches for all meal periods.

Off Campus Partners

Use your meal plan off campus too at Pizza Pizza, Swiss Chalet, Mucho Burrito, Subway, and Masseys' Fine Indian Cuisine (Richmond Street). Dine-in or take-out.

Cooking

Student residences are equipped with refrigerators and stoves.

Western Campus

For eateries at the Western University campus, please check:

eateries.uwo.ca. King's meal cards are not accepted at Western eateries.

Grocery stores

North American supermarkets offer a wide range of food selections. They usually have ethnic food as well. There is a number of North American and Asian grocery stores close to King's that are accessible by London Transit bus routes.

CANADIAN HOLIDAYS



In Canada, statutory holidays are legislated by either the provincial or federal government. On statutory holidays government offices and many businesses are closed. Restaurants are usually open. Here is a list of the upcoming statutory holidays:

2022-2023	
Labour Day	Monday, September 5, 2022
Thanksgiving	Monday, October 10, 2022
Christmas	Sunday, December 25, 2022
Boxing Day	Monday, December 26, 2022
New Year's	Sunday, January 1, 2023
Family Day	Monday, February 20, 2023
Good Friday	Friday, April 7, 2023
Victoria Day	Monday, May 22, 2023

In addition, there are many celebrations in Canada that are not statutory holidays. Some of these holidays include Valentine's Day, Remembrance Day and Halloween.

PRACTICING YOUR FAITH



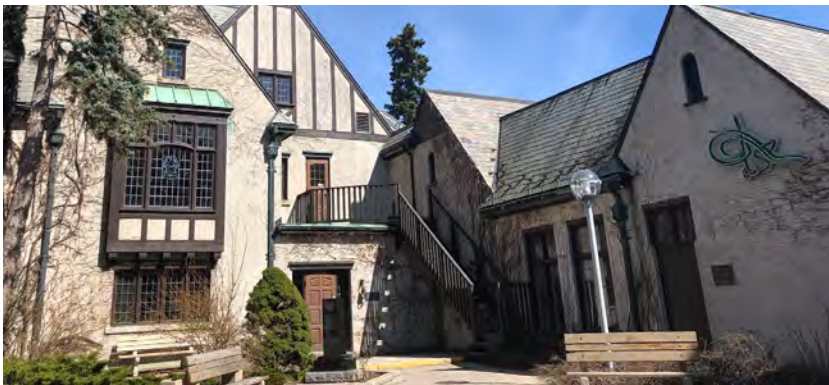
Many religions are practiced within the London community. Anyone interested can receive a places of worship in London, Ontario brochure through Campus Ministry.

Campus Ministry

The Campus Ministry team is a resource for all students at King's University College. In addition to daily and Sunday liturgy, the team coordinates student programs and offers pastoral counselling and spiritual direction.

For more information about Campus Ministry go to:
www.kings.uwo.ca/campus-ministry

Phone: 519-963-1477



EXPLORING LONDON & BEYOND

London events and places of interest:

Recreation at King's

<https://www.kings.uwo.ca/current-students/campus-life/athletics/recreation-kings-facilities/>

Western's Campus Recreation

King's students have access to all the facilities at Western including aquatics, fitness classes, squash court, drop-in sports such as basketball and badminton and more.

<https://uwo.ca/campusrec/>

London Tourism

www.londontourism.ca

Western Fair www.westernfairdistrict.com

Spikes Indoor Beach Volleyball & Rock Climbing

www.spikes.on.ca

Canada Games Aquatic Centre

www.london.ca/residents/Recreation/Aquatics/Pages/Indoor-Pools.aspx

Covent Garden Market

www.coventmarket.com

Fanshawe Pioneer Village

www.fanshawepioneervillage.ca

Boler Mountain & TreeTop Adventure

www.bolermountain.com

Restaurants

From North American to Asian to African to European, London has a variety of tastes from around the world.

- www.yellowpages.ca/dine
- www.eatdrink.ca
- www.londontourism.ca/food-and-drink

Arts and Culture

<https://london.ca/immigration/life-london-ontario/arts-culture-london-ontario>

The Grand Theatre

www.grandtheatre.com

Budweiser Gardens

www.budweisergardens.com

The Eldon House

www.eldonhouse.ca

Banting House National Historical Site

www.bantinghousehsc.wordpress.com

Masonville Mall

www.cfshops.com/masonville-place.html

The Factory

thefactorylondon.ca

Flying Squirrel

flyingsquirrelsports.ca

Ontario

The following websites have information on what to do, where to stay, and how to get to cities and attractions across the province: www.ontariotravel.net



Getting Around London

London has a lot of beautiful parks, where you can go for a walk or have a picnic.

- Springbank Park
- Elmo O. Curtis Rose Garden
- Rayner Rose Gardens
- Gibbons Park
- Harris Park
- River Forks (west of Eldon House)
- Labatt Park
- Victoria Park

Getting around by bus

All full-time students receive a bus pass in September, making bus transportation an inexpensive way to get around the city. The London transit website provides detailed routes and schedules: www.londontransit.ca/plan-a-trip/routes-schedules

By taxi

If you need quick and convenient transportation, you may wish to call a taxi. A taxi from King's to downtown London usually costs about \$9 - \$12

- Green Taxi 519-777-8888
- London Yellow Taxi 519-657-1111
- U-Need-A-Cab Ltd. 519-438-2121

By bicycle

Cycling is a convenient method of travel as well as a leisurely sport. If you are interested in buying a new or used bicycle, check our Facebook Marketplace Kijiji, or visit a local bike store.

Getting Around Ontario

By train

Via Rail Canada Inc.
1-888-842-7245
London, ON
www.viarail.ca

By air

The London International Airport
519-452-4015
flylondon.ca

Transportation to Toronto and Detroit airports

Robert Q
www.robertq.com

These buses will take you directly to and from different airports including Windsor, Detroit and Toronto.

KING'S UNIVERSITY COLLEGE STUDENTS' COUNCIL

Mission statement

The KUCSC is King's University College's official Students' council. We are comprised of over 70 various members ranging from faculty representatives, commissioners, and coordinators. At the KUCSC, there really is a role for everyone. We are an organization that advocates for the students, organizes programming, and ensures the voices of the students are represented.

The KUCSC oversees various elements of student life, including but not limited to: over 20 unique King's clubs, orientation week, King's Ball, Fall Carnival, Grad Ball, the Speaker Series, KUCSC innovators Award, and everything in between. We, the Students' Council, strive to enhance the university experience for all students at King's University College. We provide opportunities for growth and development outside the classroom in the King's, Western, and London communities. Ask your international student representative, or a member of KUCSC executive how to get involved.

Visit the KUCSC website to stay informed: www.kucsc.ca
Follow us on Twitter: www.twitter.com/KUCSC
Like our Facebook page: www.facebook.com/kucsc
Email: communications@kucsc.com

KUCSC is affiliated with the University Student Council (USC) at Western, one of the largest student governments in Canada.



For more info on USC services, check out western usc services: www.westernusc.ca

KUCSC Office is located on the second floor of the King Centre. All are welcome!

CALENDAR OF INTERNATIONAL EVENTS (subject to change due to COVID-19)



International Events	2022-2023
International Bridging Week	August 31 – September 4, 2022
Welcome Reception	September 16, 2022
Fall Toronto Trip	September 25, 2022
Thanksgiving Dinner and Celebration	October 5, 2022
Halloween Party	October 21, 2022
Diwali Lunch	October 22, 2022
Sports Night	Date TBD
International Education Week	November 14 – 18, 2022
Christmas and End of Year Party	December 2, 2022
Winter Bridging	January 1-2, 2023
Welcome Back Social	January 6, 2023
Lunar New Year Dinner	January 20, 2023
Winter Toronto Trip	TBD
Hockey Night	TBD
Cultural Performing Arts Festival	March 3, 2023
Sugar Bush Tour	March 16, 2023
Farewell Dinner	March 31, 2023

KING'S UNIVERSITY COLLEGE DIRECTORY

Campus Ministry

519-433-3491 ext. 4422
Monday - Friday 9 a.m.–4:30 p.m.
Wemple W139

- Pastoral Counselling
- Mass Schedule
- Volunteer Programs

Cardinal Carter Library

519-433-3491 ext. 4505
Hours posted at entrance to building.
Located on the South Side of Epworth Ave.

- Research facilities
- Scholarly resources
- Study space
- Internet Access
- Electronic Information

Computer Lab

Hours posted on the door
Wemple W143

- Internet Access
- Computer Help
- Word Processing
- Printing and Photocopying

Enrolment Services

519-433-3491 ext. 4999
Monday - Friday 9 a.m.–4:30 p.m.
Wemple W104

- kings@uwo.ca
- Admissions
 - Registration Transcripts
 - Official letters

Food Services Office

519-433-3491 ext. 4389
Monday - Friday 9 a.m.–4:30 p.m.
Wemple W053

- Food Quality
- Dietary Needs

Information Technology Services

519-433-3491 ext. 4441
Wemple W047
helpdesk@kings.uwo.ca

- IT Help
- AV Equipment set-up

Central Services

519-433-3491 ext. 4315
Monday - Friday 9 a.m.–4:30 p.m.
Wemple W002

- Postage Stamps
- Sending/ Receiving Mail
- Lost and Found

Office of the Academic Dean

519-433-3491 ext. 4406
Monday - Friday 9 a.m.–4:30 p.m.
Dante Lenardan Hall S105

- academic.dean@uwo.ca
- Degree Requirements
 - Academic Counselling

Student Affairs

519-433-3491 ext. 4321
Monday - Friday 9 a.m.–4:30 p.m.
Wemple W157

- Accessibility, Counselling and Student Development (ACSD):
- Personal Counselling
 - International Student Services
 - Learning skills
 - Career Services
 - Disability Accommodations

Residence Office

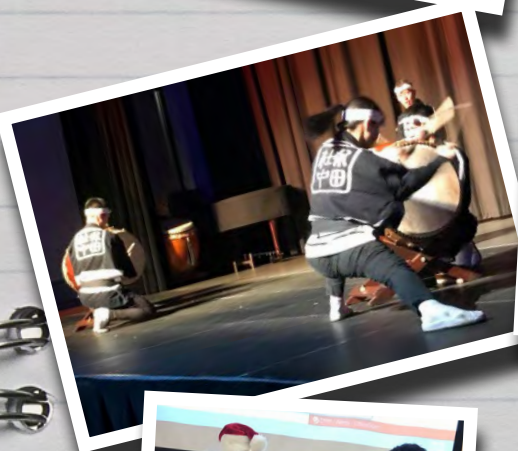
519-433-3491 ext. 4700
Monday - Friday 9 a.m.–4:30 p.m.
residence@kings.uwo.ca

- Alumni Court Residences AC300
- Help with Residence Matters
 - Residence Questions

Student Financial Services

519-433-3491 ext. 4319
Monday - Friday 9 a.m.–4:30 p.m.
Wemple W144

- Studentfinance@kings.uwo.ca
- Tuition and fee payments
 - Health Coverage
 - Financial Information and Assistance



King's International

King's University College
266 Epworth Avenue
London, Ontario, Canada
N6A 2M3

Telephone: 519-433-3491
ext. 4623

Toll Free: 1-800-265-4406

kings.uwo.ca

international@kings.uwo.ca



@KUCIntl



KUC.international



Kingsatuwo



kings_intl



kingsatwestern

A Place to Be.
A Place to Become.

