

WHAT CAN YOU DO WITH A THANATOLOGY DEGREE?

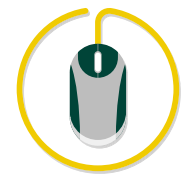


Employers are interested in people who are able to assist individuals that have experienced life-altering change, loss, and transition. The Thanatology program prepares students to work in many different sectors and to engage in graduate studies across many fields. Current areas of potential growth and employment for Thanatology graduates focus on end of life care and decision-making, bereavement support, immigration and displacement, environmental grief, political grief, and meeting the needs of an aging population.

Examples of places where our graduates have been employed:

- | | |
|---|--|
| <p>Service sector positions</p> <ul style="list-style-type: none"> ▪ Journey Through Loss Bereavement Support ▪ Hospice support ▪ Changing Ways ▪ Funeral service ▪ London Intercommunity Health Centre ▪ volunteer coordinator, spiritual care, and program development | <p>Government positions</p> <ul style="list-style-type: none"> ▪ 911 dispatch ▪ Police services ▪ Victim Services ▪ Victorian Order of Nurses bereavement support programs ▪ Workplace Safety and Insurance Board ▪ Ontario Works |
| <p>For-Profit/Business sector</p> <ul style="list-style-type: none"> ▪ Estate planning ▪ Legacy gift liaison ▪ Financial planning ▪ Insurance advisor | <p>Education</p> <ul style="list-style-type: none"> ▪ Community College instructor ▪ University Faculty member ▪ Primary/Secondary school teacher ▪ Community educator |

ONLINE RESOURCES



- **King's University College Career Connect**
👉 kings.uwo.ca/career-connect
- **King's University College Job Board**
👉 www.kingsjobboard.ca/jobs
- **King's University College Alumni Services**
👉 kings.uwo.ca/alumni/benefits-and-services
- **Western University Student Success: Find Work**
👉 success.uwo.ca/careers
- **Pillar Non Profit for London Region Opportunities**
👉 www.pillarnonprofit.ca/jobs

A PLACE TO BECOME



Examples of places where our graduates have gone after graduation:

GRAD SCHOOL

- Masters Degree in Social Work
- Masters of Counselling Psychology
- Teacher's College
- Master's and Doctorate in Bioethics
- Child Life Specialist
- Doctorate in Critical Thought and Philosophy
- Doctorate in Health Promotion and Education
- Doctorate in Health Science Administration
- Law school
- Medical school
- Nursing/Nurse Practitioner and Doctoral Programs in nursing

EMPLOYMENT

- Alzheimer's Society
- Wellspring
- Bereaved Families of London
- The Memorial Boys and Girls Club
- Ronald McDonald House
- SARI therapeutic riding
- Goodwill Industries
- Parish bereavement ministries
- L'Arche London
- Daya Counselling Centre

PROGRAM HIGHLIGHTS:

- The only undergraduate program in Thanatology in the world
- Interdisciplinary academic program that supports broad-based perspectives
- Courses integrate content relevant to children, adults, and older individuals
- Faculty from diverse backgrounds, including clinical and applied areas, provide students with both theoretical foundations and practical knowledge
- Major and Minor Modules can be completed online after finishing breadth requirements
- Certificate in Loss, Grief, and Bereavement, with focus on hands-on application
- Placement opportunity available through the practicum in Thanatology
- Address current issues, such as Medical Assistance in Dying (MAiD), political grief, environmental grief, and supporting an aging population.

Thanatology

The study of loss, death, and grief



What is Thanatology?

Thanatology literally means the study of death. However, it also incorporates many aspects of the human experience that involves loss and grief. Grappling with loss is an essential aspect of being human; the losses that we experience also help us to learn, grow, and deepen our appreciation of life. While Thanatology may be about the study of death, it is also about understanding that life is a precious gift, and every moment matters.

kings.uwo.ca/thanatology

EXPERIENCE GUIDE

LEARN MORE ABOUT
THE THANATOLOGY PROGRAM
👉 kings.uwo.ca/thanatology

WELLNESS RESOURCES
STUDENT AFFAIRS
👉 kings.uwo.ca/wellness



A Place to Be. A Place to Become.

Learn more:
kings.uwo.ca/thanatology

King's University College Thanatology Than Clan



@KingsAtWestern



THE THANATOLOGY PROGRAM IS FOR STUDENTS:

- Who want to develop critical research and analytical skills
- Are interested in expanding their awareness of loss, death, grief, and bereavement
- Who would like to expand their understanding of the ways in which loss and grief shape our lives
- Wish to meet likeminded colleagues who want to look more closely at how loss and death are central to our personal, cultural, societal and religious worldviews
- Are interested in looking at loss, dying, death, and bereavement across a number of areas of scholarship, including ethics, spirituality, popular culture, social justice, childhood and adolescence, and many others.
- Who want to gain an appreciation for life and how to live more fully.

LEARNING OUTCOMES:

The academic and practical learning that takes place in the Thanatology program will prepare students in both the personal and professional spheres of their lives. Students who complete a Thanatology degree will have a deep understanding of the role of change, loss, and transition in everyday life. Their knowledge, insights, and experiences are especially valuable in careers in health care, service sector positions, as well as education and policy development for vulnerable populations.

On completion of a degree in Thanatology, students will have the following knowledge, skills, and experience:

AWARENESS:

- Understand how social attitudes about death and grief shape the lives of individuals, communities, and governmental bodies
- Identify and address current issues in the field related to dying, death, grief, and loss throughout all aspects of the lifespan.
- Appreciate the impact of loss, change, and transition in daily life
- Recognize the ways that grief and trauma can have an impact on individuals and communities
- Identify current thinking related to bereavement support
- Address ethical and spiritual issues that arise in contexts of death, loss, and grief

SKILLS AND EXPERIENCE:

- Bereavement education and support
- Foster end of life choices and decision-making
- Crisis response and trauma intervention at the individual and community levels
- Developmentally-appropriate conversations about death, loss, and grief
- Ethical frameworks for different aspects of support and care at the end of life
- Hands-on skill building from practicum placement and experiential workshops
- Critical thinking and analysis of issues related to death, loss, and grief

ABOUT THE PROGRAM

The Thanatology program at King's is the only program of its kind in the world. This program explores the many different areas of life and experience that can be affected by significant change, loss, and transition. The content and learning experiences that are offered through the various courses provide a diverse exploration of how individuals, communities, and government structures address death and grief. Students have opportunities for classroom-based learning, blended learning, online learning, and community placements, all of which provide a multifaceted and integrated learning opportunity. The undercurrent of the program is that an appreciation of life as a limited resource and change as a constant companion allow us to embrace living in a more conscious and fulfilling way.

WHY STUDY

THANATOLOGY TODAY?

➔ kings.uwo.ca/thanatology/

WELLNESS RESOURCES

STUDENT AFFAIRS

➔ kings.uwo.ca/wellness

A PLACE TO BE

THINK Imagine, Create

FIRST YEAR

- Make an appointment to meet with Faculty during Office Hours
- Consider joining the KAMP Program to meet upper year student mentors
- Review your program progression requirements and plan for a successful degree path.
- Sign up for the Co-Curricular Record Check services offered by Counselling and Student Development

DISCOVER Possibilities

- Check out programs offered by Campus Ministry Development and Peace Group
- Attend events organized by the Centre for Education about Grief and Bereavement
- Visit The Write Place for assistance with assignments and writing skills
- Develop time management skills along with self-care strategies
- Make an appointment with a Career Counsellor at King's to review potential career opportunities with your degree
- Sign up for intramurals and check out the Western Mustangs games

ENGAGE In Local and Global Community

- Attend King's International Inter-Cultural Events
- Volunteer at the St. Joseph's Hospitality Centre through Campus Ministry
- Consider joining the KUCSC as a first year or program rep.
- Join the Thanatology Club for events and news
- Join the Thanatology Club Facebook page
- Follow the Thanatology Facebook group: King's University College Thanatology

MIDDLE YEARS

- Check out the wealth of undergraduate research opportunities on campus
- Consider taking the community-based practicum in Thanatology
- Be a notetaker through the King's Accessibility Services
- Attend the Learning Skills Services Drop-in Sessions
- Make sure you do your intent to register (ITR)

- Explore your interests by volunteering on campus
- Meet with your academic counsellor to make key academic decisions.
- Think about writing for the Regis or the Western Gazette
- Review leadership roles offered by King's and Western through the Club system
- Explore opportunities such as research assistants and scholarships
- Consider different ways to build engaged learning and international experience into your degree

- Check out the Life after King's Series to learn about where grads have found career paths
- Get involved with The Thanatology Club through the Executive Positions
- Consider joining the Thanatology Loss Lab exploring issues related to loss and grief
- Apply for student support grants to attend Provincial, National, International conferences by submitting a paper for presentation

GRADUATING YEAR

- Attend the Graduate School Education Sessions
- Look at opportunities to start your working career in London; attend the employer information sessions and Career Fairs
- Finalize your portfolio to share with graduate schools and employers
- Meet with faculty early to talk about graduate school and reference letters
- Meet with career services to review resumes and job search tools

- Contribute to the King's Undergraduate Research Journal
- Meet with alumni for informational interviews
- Attend information sessions on Teacher's College, Law School, and Graduate school preparation

- Contribute to the King's Undergraduate Research Journal
- Meet with alumni for informational interviews
- Conduct informational interviews with organizations you would like to work for

LEARN MORE ABOUT THE THANATOLOGY PROGRAM

➔ kings.uwo.ca/thanatology

THE KING'S ANNUAL CHECKLIST

- Meet regularly with the Academic Dean's Office to ensure you are on track towards your degree requirements
- Check out programs offered by Student Affairs
- Continually review your financial aid
- Check out opportunities to work on campus or off-campus throughout your degree
- Volunteer and support your community at King's
- Use the library resources offered by the Cardinal Carter Library
- Check out Career Connect on a regular basis
- Meet with Faculty during their office hours

ALUMNI PROFILE



Rachael Park
BA Hons '16 Thanatology and Criminology
Graduation Year: 2016

“*Thanatology doesn't just provide you with a skill set for a particular job, it provides you with a skill set for life. It's such a solid grounding. One that can be applied to any career path.*”

CURRENT CAREER

911 Dispatcher

CAREER OVERVIEW

I take all incoming 911 calls and transfer them to ambulance and fire, or dispatch a police officer, or both. I am the first person that people in crisis situations communicate with before first responders get to them.

LEARN MORE ABOUT OUR ALUMNI

➔ kings.uwo.ca/academics/thanatology/alumni-profiles